





**RESOURCE RECOVERY Australia**

25 years experience  
social enterprise | waste management

RRA work with councils, industry and community to operate and scale social enterprises that sustainably manage waste and generate local training and employment opportunities for people experiencing disadvantage.

**\$60,000**  
Landfill Operation Contract

**1991**

**2016**

**2013**  
**SOCIAL ENTERPRISE**  
AWARD WINNER

**Recyclables & Re-use**  
Recovery Tip Shop  
Green Waste Composting  
Other sites - Tea Gardens, Bulladellah, Stroud  
Transfer Stations  
Land Clean Ups

**Landfill Capping and Remediation**  
Excavation and Earthmoving  
Mattresses, EPS, Glass Bottles, Problem Wastes  
Bulky Waste Pick Ups

**Green Corps - Bush Regeneration**  
The Green - Community Garden  
Green Bikes  
Men's Shed


**Uptover - Upcycling Workshops**  
Builders Barn

**\$2 Million TURNOVER**  
Great Lakes Resource Recovery Park  
25 year Masterplan with Council  
Resource Recovery Australia Consulting



## Why am I here?

- Spatially challenged
- Needing help



<http://www.sbs.com.au/news/map/labour-markets>



## Why are old mattresses a problem?

End of life mattresses are a significant and growing problem in Australia

~1.6 million are disposed/yr to landfill taking up ~1.2 million m<sup>3</sup>

Each mattress contains:

- 15.5kg of steel
- 3kg of foam
- 2kg of textile
- 2kg of timber
- 0.7kg husk
- 7kg quilting

Loss of valuable resources





### Why do anything about it?

- Mattresses in waste are becoming of increasing concern to governments in Australia
- Growing problem of illegal dumping by the community
- Difficult to handle and transport for recycling
- Lack of visible action on behalf of the mattress industry



### Our Social Agenda

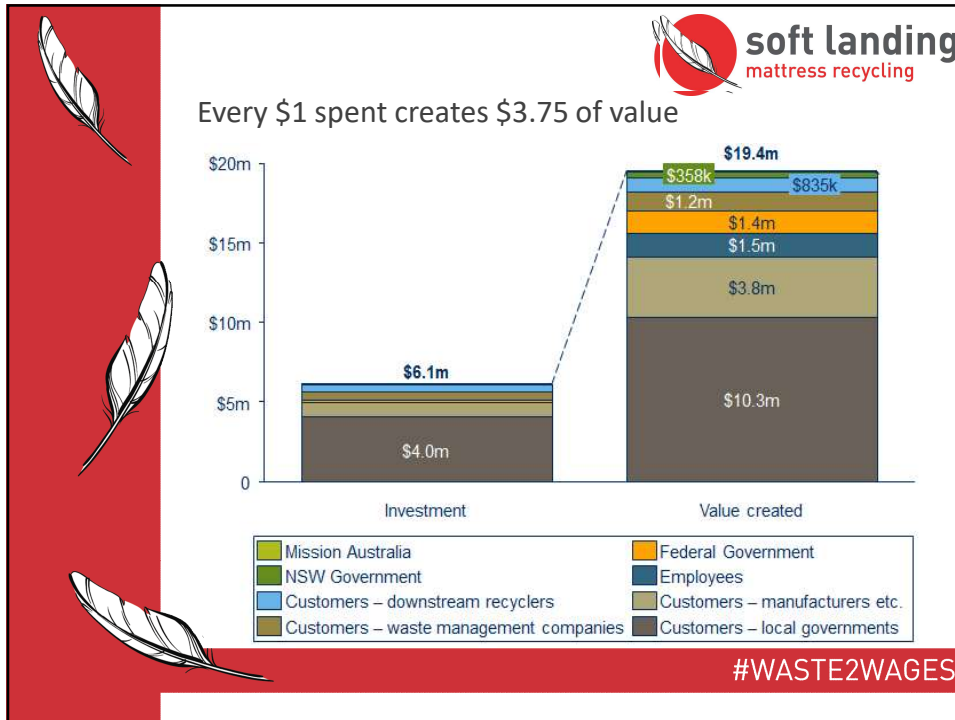
Aboriginal people represent 3% of population and 26% of prison system

40 top disadvantaged postcodes in Australia include our two head office regions.

Entrenched disadvantage: long term unemployed, mental health, incarceration.

For every \$1 spent on Soft Landing, \$3.75 of value is created



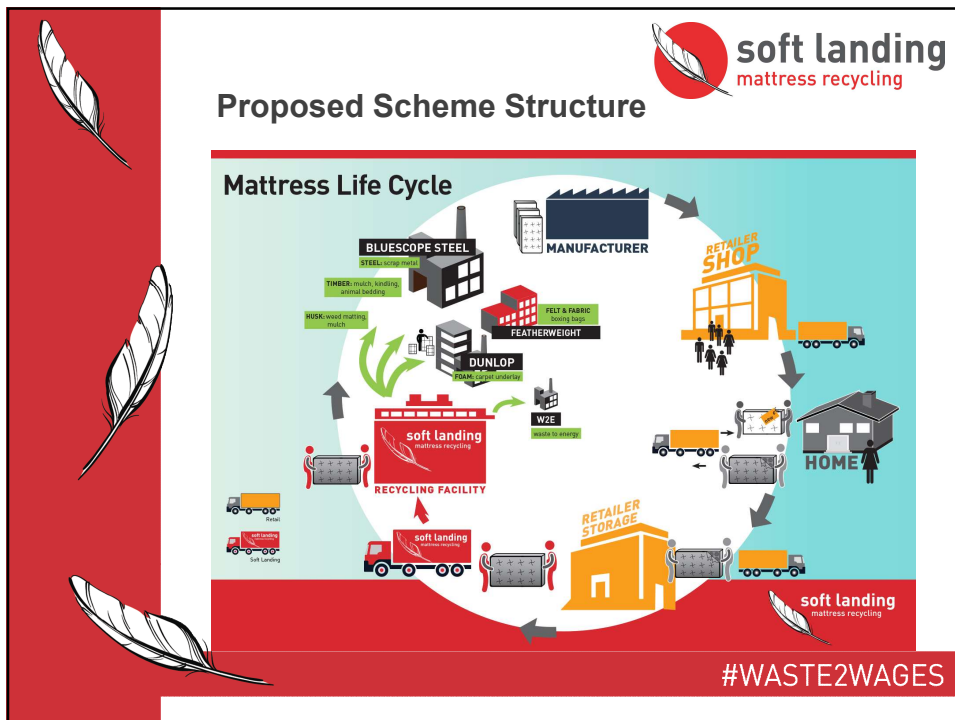


**soft landing**  
mattress recycling

### Vision

- Soft Landing drives the Australian Mattress Product Stewardship Scheme
- Maximise Environmental and Social Impact – Nationally
- Become a brand and network that all stakeholders and consumers want to align with.

#WASTE2WAGES





**soft landing mattress recycling**


## What we need

- Identify primary collection centres and routes to nearest recycling centre
- Identify secondary collection centres and routes to nearest recycling centre
- Estimated frequency of collection at identified centres
- Identify centres for future recycling centre expansion
- Identify locations/areas that cannot feasibly be serviced under current models
- MAP IT



## What's in it for you

- Recognition of work with a social enterprise, on a national project
  - On Soft Landing and Scheme website
  - In our stakeholder newsletter
- Certificate of recognition
- Our thanks and immense gratitude!



## Project details

- Lead – me
- Project scoping – Mercury/Talis
- Data – me
  - some ABS, some retailer/ manufacturer
  - Some survey
- Time-frame – starting late November
  - Anticipated 10-12 weeks if data available
- Time commitment – 1 day+ per week



[softlanding.com.au](http://softlanding.com.au)

#WASTE2WAGES

